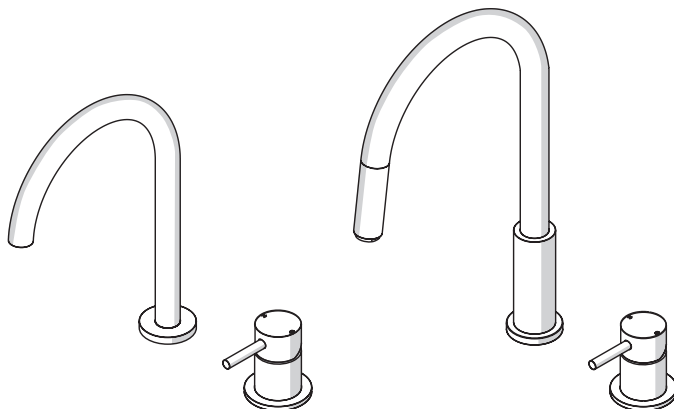
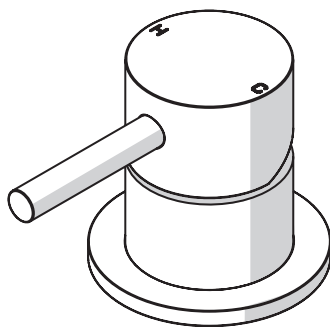


Hob Mixers Collection

Installation Guide



P A R
TAPS



www.partaps.com

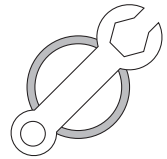


[/ParTapsPtyLtd](https://www.facebook.com/ParTapsPtyLtd)



[@par_taps](https://www.instagram.com/par_taps)

Important Information



Prior to Installation:

- Please read these instructions completely.
- All instructions serve as a guide only and must be installed by a licensed plumber in accordance with AS/NZS 3500.1. Installation carried out by unlicensed individuals will void all warranties.
- Supply lines must be flushed prior to installation to remove any foreign matter.
- All products are suitable for use with most instantaneous hot water heaters, however are not compatible with gravity-fed water systems.

Water Pressure & Temperature:

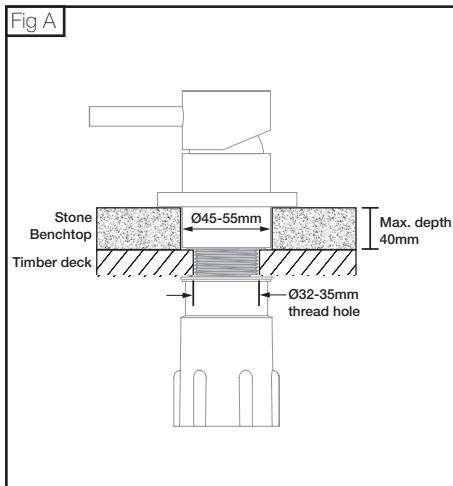
This Par Taps products are to be installed by a Licensed Plumber in accordance with AS/NZS 3500.1

Maximum Water Temperature — — — — — 80° Celcius

Regulatory Maximum Water Pressure — — — — — 500kPa

Note: In areas where the recommended maximum water pressure is exceeded, pressure-limiting valves must be installed.

Before Installation



Prior to installing, calculate the finished benchtop thickness to ensure the Cover Plate and Handle will fit the final assembly.

Drill a 32mm (no larger than 35mm) in the timber deck.

Mixer needs to seat onto timber deck.

Stone or benchtop surface cut out should be 45-55mm to ensure mixer flange covers the hole after assembly.

A maximum of 40mm benchtop thickness to allow cover flange to fit mixer body.

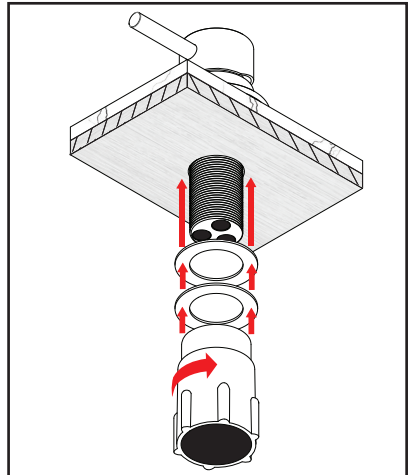
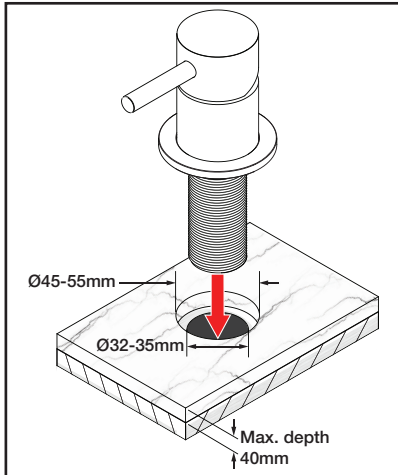
Recommended clearances indicated Fig A.

Hob Mixer

1. Insert mixer assembly into benchtop.
Ensure that mixer seal is seated flush onto timber deck.

Please note: Mixer flange should be on during this step, to clear benchtop depth, slide the flange up.

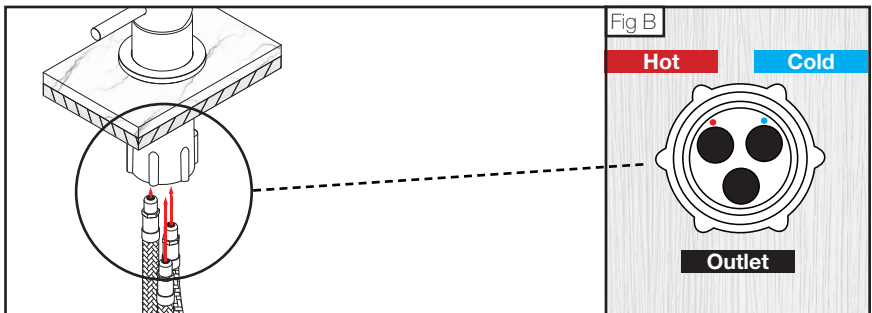
2. Slide the rubber washer, then the steel washer over the mixer tail. Secure them with the screw lock



3. Before installing flexible water hoses, apply lubricant to the O-rings. Insert 'Hot' and 'Cold' inlet hoses into corresponding connections on underside of the mixer tail (Fig B) and hand-tighten until reaching a mechanical rest.

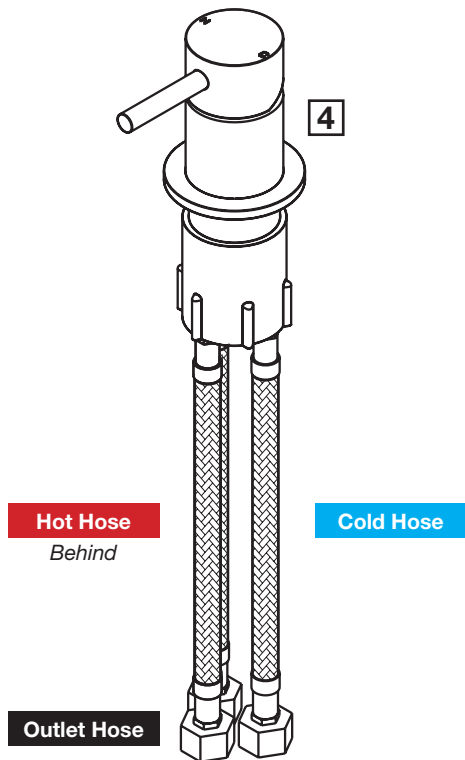
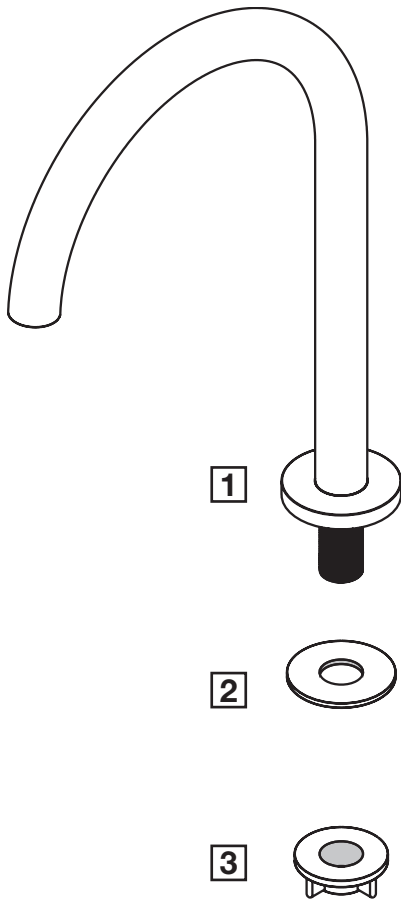
Insert the outlet hose into the remaining connection on mixer tail. Hand-tighten. **Do not tighten with tools during this step.**

Hand-tighten connectors with the gasket seal (nut) to corresponding mains water supply, and the outlet hose to the remote outlet. Apply 1/4 turn using appropriate wrench to all connectors.



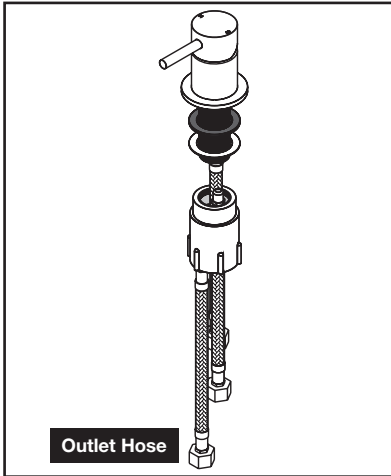
Hob Mixer Sets

- 1** Hob Outlet
- 2** Plastic Washer
- 3** Plastic Nut
- 4** Hob Mixer

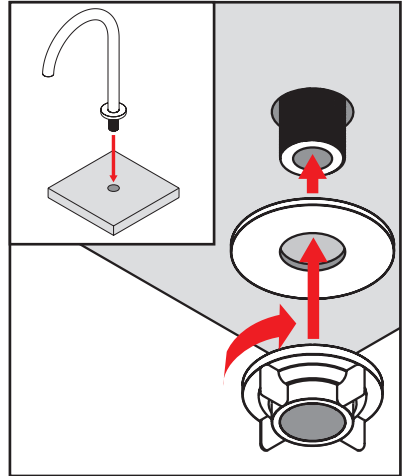


Hob Mixer Sets

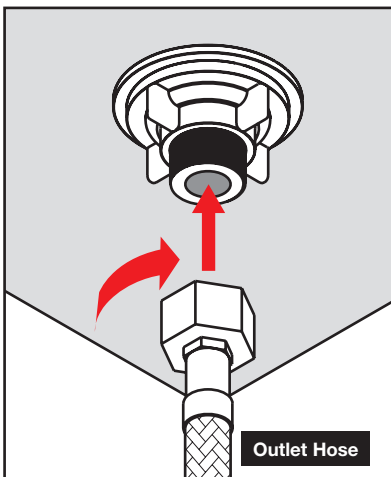
1. Before installing the Hob Mixer Sets, ensure the Hob Mixer (4) is already assembled from page 3



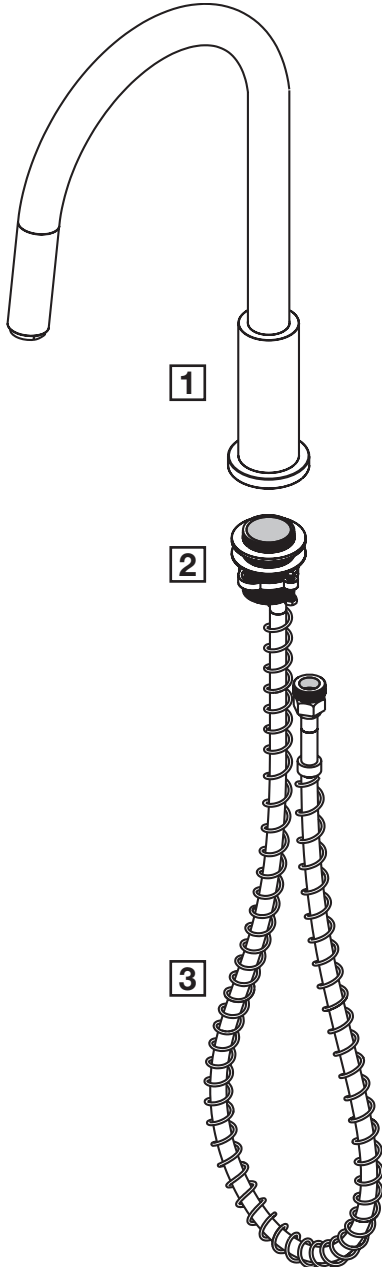
2. Place the hob outlet (1) into position. Align the plastic washer (2) below the outlet hole of the benchtop surface. Tighten the plastic nut (3) firmly



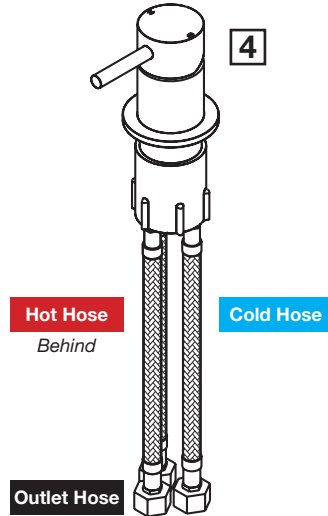
3. Screw the outlet hose into the male thread of the outlet. After installation ensure the mixer and outlet are secured firmly and there are no sign of leakage



Hob Mixer Pull Out Sets

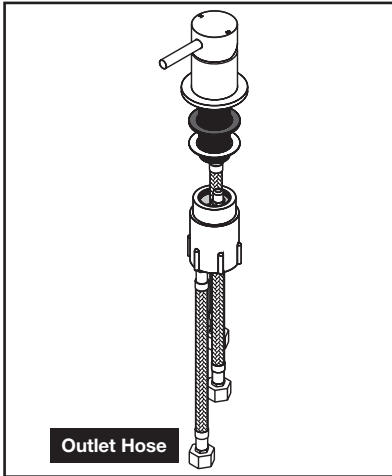


- 1** Hob Pull Out Outlet
- 2** Brass Mount Assembly
- 3** Pull Out Hose
- 4** Hob Mixer

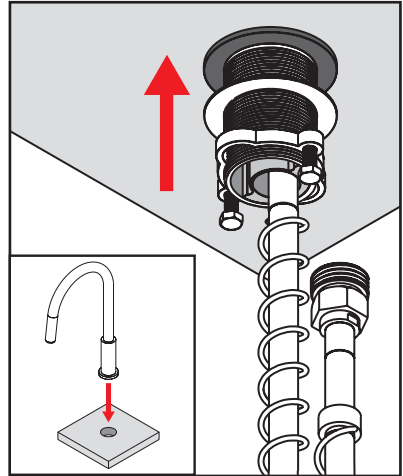


Hob Mixer Pull Out Sets

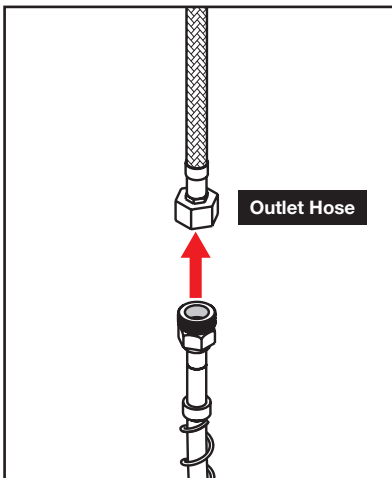
1. Before installing the Hob Mixer Sets, ensure the Hob Mixer (4) is already assembled from page 3



2. Place the hob pull out outlet (1) into position. Align the brass mount (2) below the outlet hole of the benchtop surface and tighten the assembly firmly



3. Screw the outlet hose into the end of the pull out hose (3). After installation ensure the mixer and outlet are secured firmly and there are no sign of leakage





P A R
TAPS