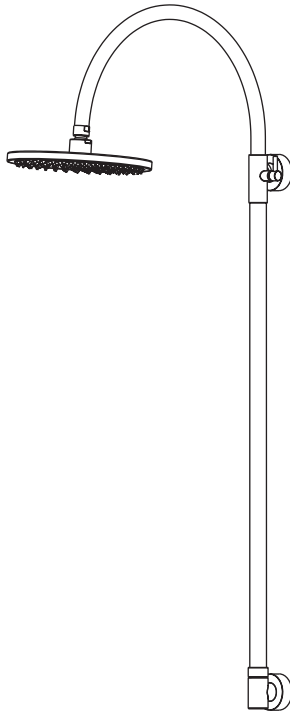


Lugano Exposed Wall Shower & Arm - Extendable

Installation Guide



P A R
TAPS



www.partaps.com

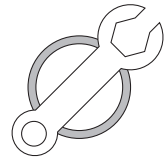


[/ParTapsPtyLtd](https://www.facebook.com/ParTapsPtyLtd)



[@par_taps](https://www.instagram.com/par_taps)

Important Information



Prior to Installation:

- Please read these instructions completely.
- All instructions serve as a guide only and must be installed by a licensed plumber in accordance with AS/NZS 3500.1. Installation carried out by unlicensed individuals will void all warranties.
- Supply lines must be flushed prior to installation to remove any foreign matter.
- All products are suitable for use with most instantaneous hot water heaters, however are not compatible with gravity-fed water systems.
- Please check all measurements prior to drilling holes in

Water Pressure & Temperature:

This Par Taps products are to be installed by a Licensed Plumber in accordance with AS/NZS 3500.1

Maximum Water Temperature - - - - - 80° Celcius

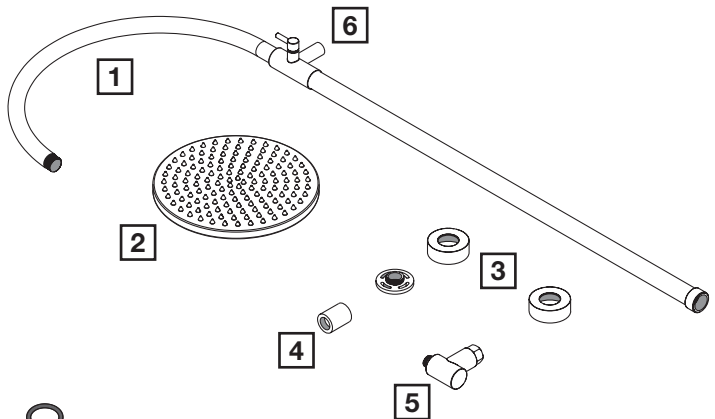
Maximum Water Pressure - - - - - 1600kPa

Regulatory Maxumim Water Pressure - - - - - 500kPa

Note: In areas where the recommended maximum water pressure is exceeded, pressure-limiting valves must be installed.

Parts List

- 1** Shower Arm & Rail
- 2** Shower Rose
- 3** Wall Flange x2
- 4** Wall Bracket Mount
- 5** Wall Inlet Elbow
- 6** Rail Extension Tensioner



Screw



Accessory Plugs



24mm Rubber

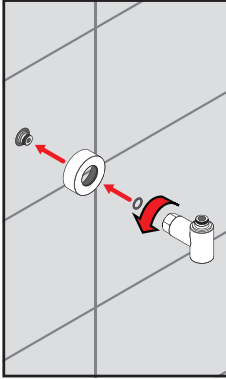


18mm Rubber

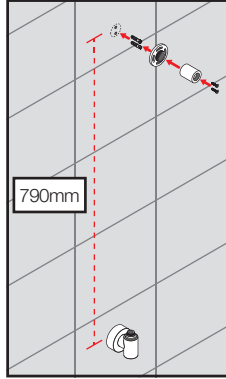
Installation

1. Insert 18mm Rubber, Water Slide the Flange (3) and Water Connection Elbow (5) to the 1/2 inch thread.

Use a spanner to tighten the connector (5) to the 1/2 inch thread

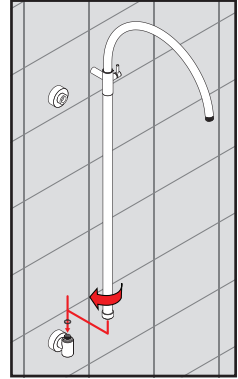


2. Measure 790mm from the middle of Wall Connection Elbow (3) to the Wall Bracket Mount (4). Then drill and screw in the Wall Bracket Mount (4) on the wall and slide in the Wall Flange (3) afterwards

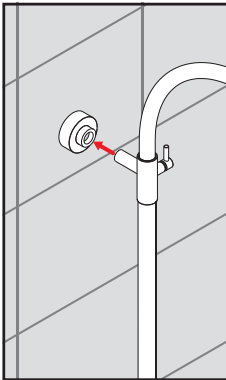


3. Insert 24mm rubber onto the Water Connection Elbow (5). Then screw the Shower Arm & Rail (1) onto the Connection Elbow (5).

Tighten with spanner

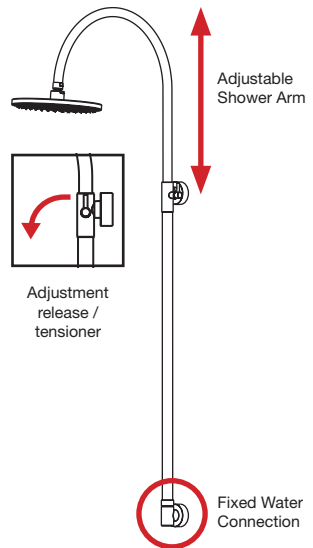
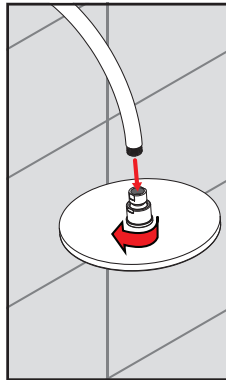


4. Push the Rail Extension Tensioner (6) into the Wall Bracket Mount (4) and tighten the grub screw to secure it



5. Screw the Shower Rose (2) to the Shower Arm (1) and tighten with a spanner

Check operation and leaks before use





P A R
TAPS