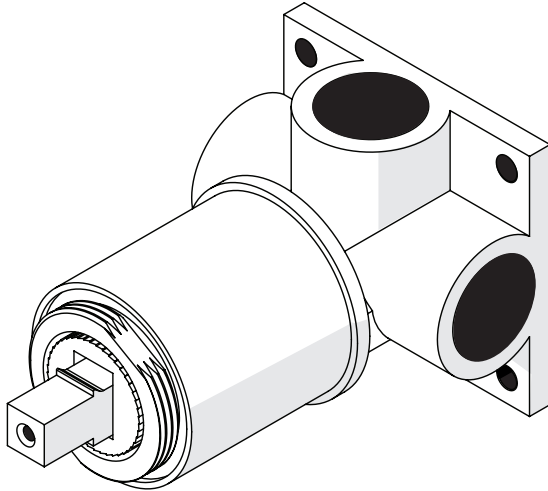




P A R
TAPS



Mixer Body Extension 35mm

Installation Guide

Important Information



Prior to Installation:

- Please read these instructions completely.
- All instructions serve as a guide only and must be installed by a licensed plumber. Installation carried out by unlicensed individuals will void all warranties.
- Supply lines must be flushed prior to installation to remove any foreign matter.
- Ensure that water is turned off at mains before installation
- All products are suitable for use with most instantaneous hot water heaters, however are not compatible with gravity-fed water systems.

Water Pressure & Temperature:

This Par Taps products are to be installed by a Licensed Plumber in accordance with AS/NZS 3500.1

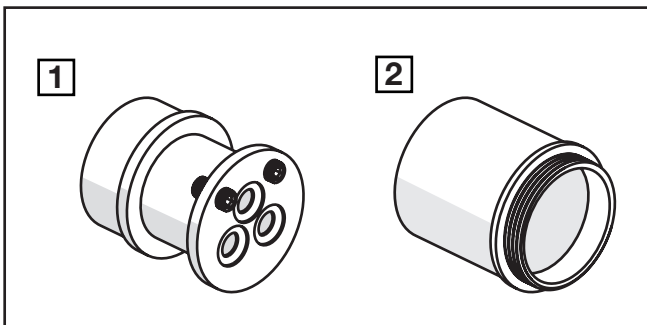
Maximum Water Temperature - - - - - 80° Celcius

Maximum Water Pressure - - - - - 1600kPa

Regulatory Maxumim Water Pressure - - - - - 500kPa

Note: In areas where the recommended maximum water pressure is exceeded, pressure-limiting valves must be installed.

Parts

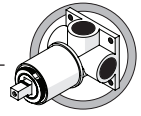


- 1** Body Extension
- 2** Mixer Sleeve

Product Depictions in this Guide

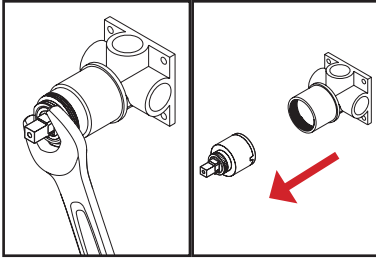
For illustrative purposes, Burj products have been featured in this guide. There will be variations in appearance between this guide and products ranges, but installation remains identical.

Installation

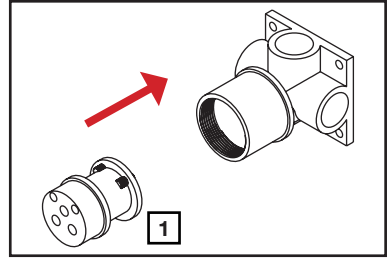


1. Remove the Handle from the wall mixer (using 2.5mm allen key) and remove the back plate.
Then unscrew the Mixer dome to expose the mixer body.

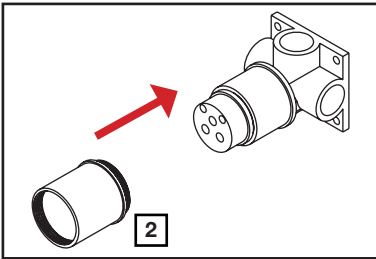
2. Using a spanner or socket, remove the Cartridge Locking Nut and remove the Mixer Cartridge.



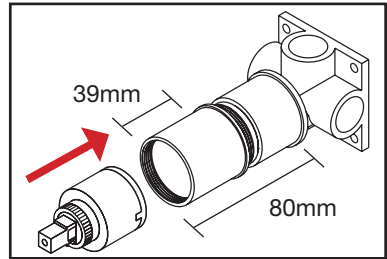
3. Insert the Brass Body Extension (1) into the Mixer Body. Ensure that the location pins are orientated correctly within the body.



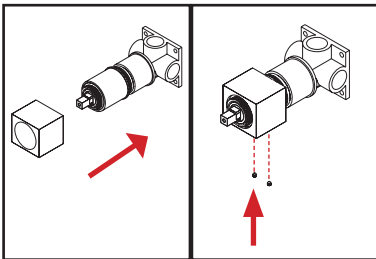
4. Screw the Extension Sleeve (2) onto the Brass Body Extension (1)



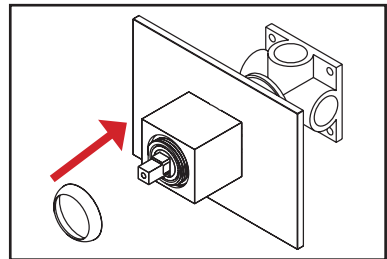
5. Re-Insert the Mixer Cartridge in correct orientation using the location pins. Pressure test to ensure water tightness.



6. Slide Mixer Body Sleeve over the Extension Sleeve (2). Tighten grub screws to secure.



7. Re-install Mixer Dome, Backplate and Handle to complete mixer. Ensure handle grub screws are tightened.





P A R
TAPS



www.partaps.com



[/ParTapsPtyLtd](https://www.facebook.com/ParTapsPtyLtd)



[@par_taps](https://www.instagram.com/par_taps)